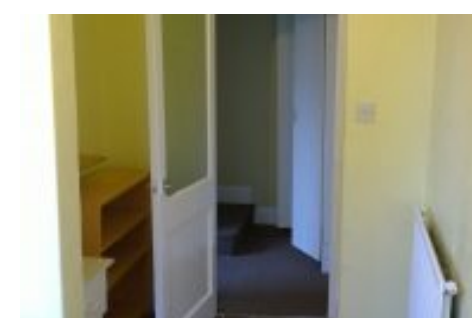






# 2 Bedroom Flat, Brighton Grove Fallowfield



## Details

Address: Brighton Grove  
Area: Fallowfield  
Bedrooms: 2 Bed property  
Bathrooms: 1  
Off Road Parking: No  
Price (pppwk): 70  
Price (pppcm): 350  
Availability: 1st July 18  
Our Ref: R/206

## Description

First floor flat in Fallowfield, situated in a quiet leafy tree lined street.

This property features 2 large double bedrooms, a large lounge, fully fitted kitchen and bathroom, fully fitted bathroom shower and Wc, washing machine, GCH and a intruder alarm. Comes with all furniture and white goods included.

Only 1 min walk from Wilmslow Road and its great transport links to the University Campuses and the City Centre, and very close to the lively centre of Fallowfield with all it amenities.

Available from August 2017 on an 12 month contract with half rent in July & August, sorry but we cannot accept DSS or Housing Benefit on this property. Ref: R/206.

Deposit of £350 and guarantor required for each tenant.